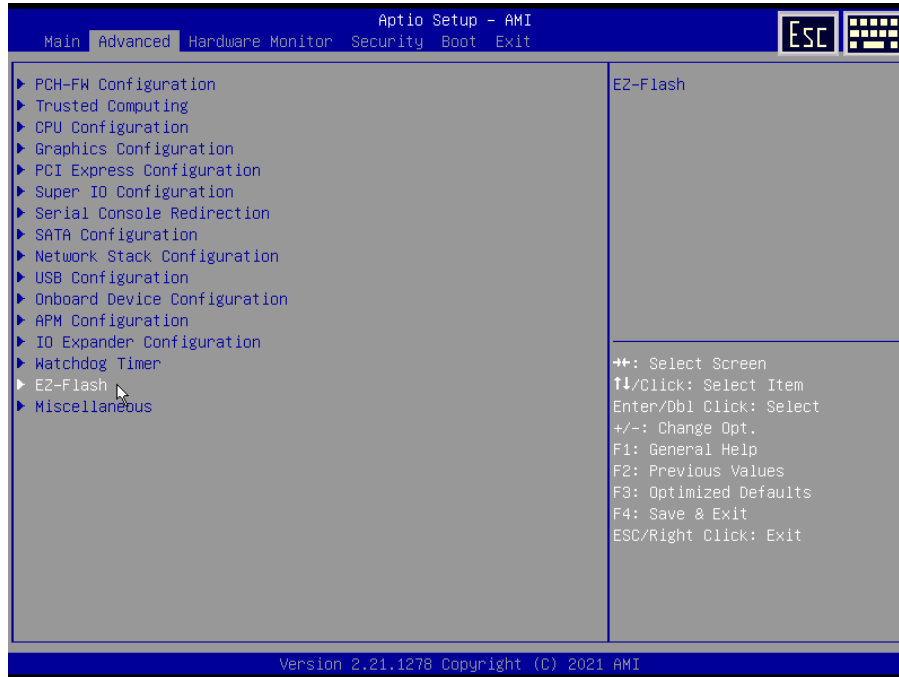
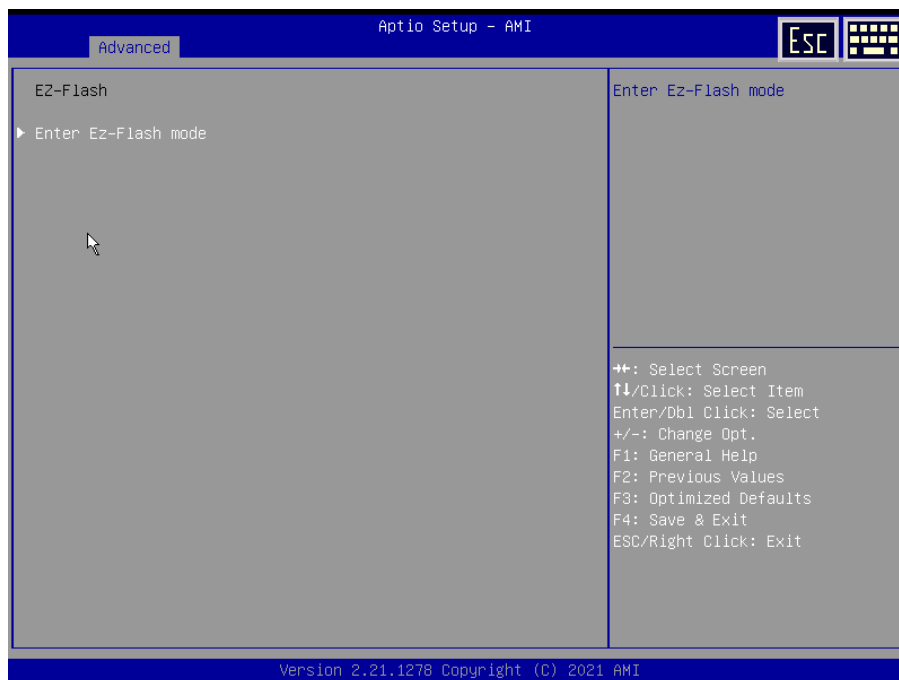


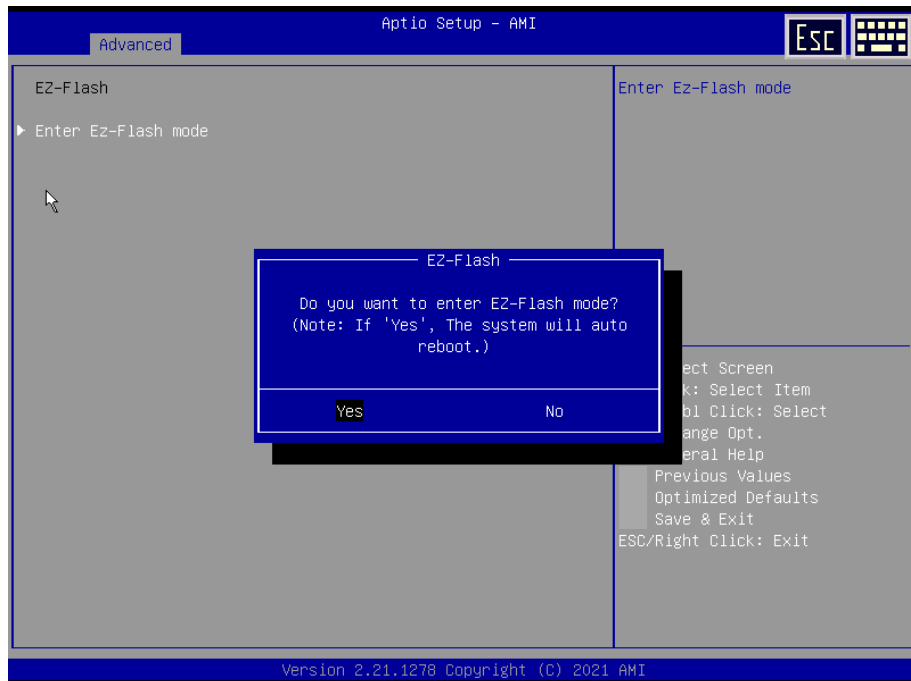
S4S-J6-EHL Flash BIOS SOP

1. Prepare a USB flash drive formatted as **FAT32** or **NTFS**.
2. Copy BIOS image into USB flash drive. (ex: S4S-J6-EHL_SAM4S_10300.**CAP**)
3. Plug in USB flash drive to S4S-J6-EHL platform.
4. Power on and press “Delete” key to enter BIOS setup menu.
5. Select “Advanced → EZ-Flash”

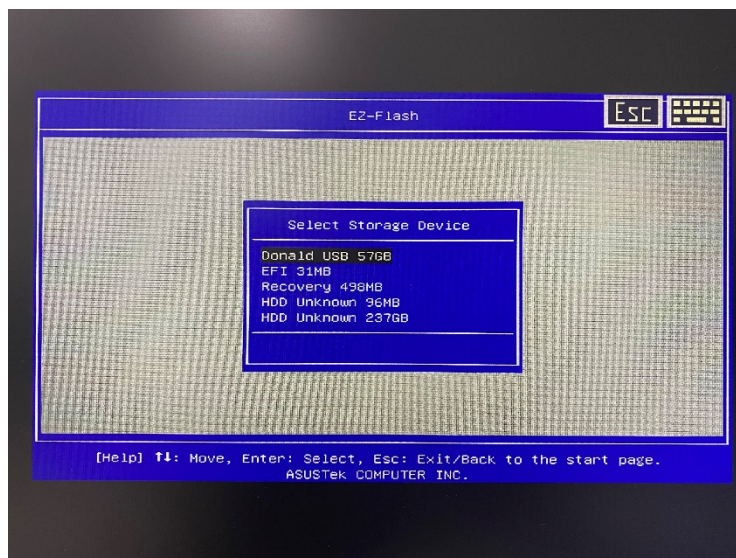


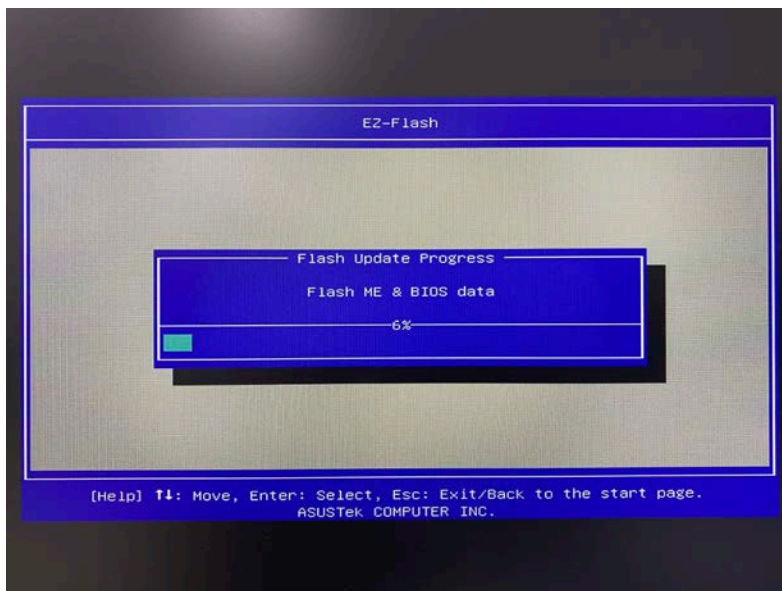
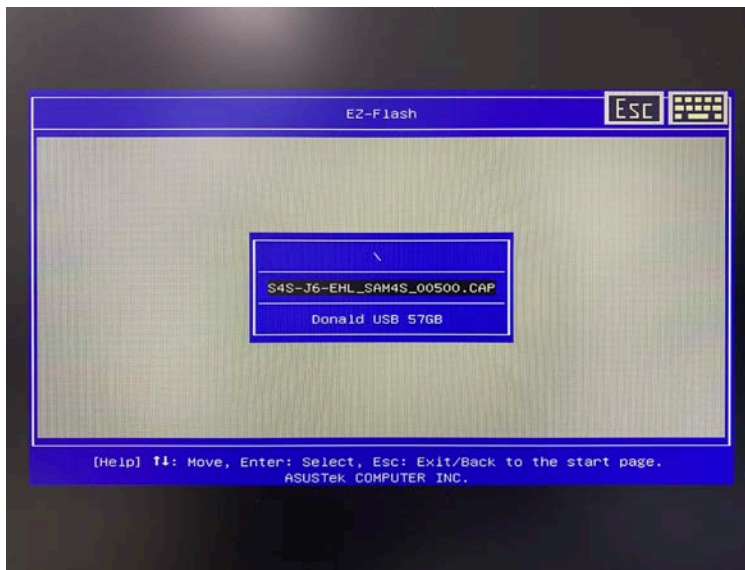
6. Select “Enter EZ-Flash mode” and press “Yes” to enter BIOS flash process.



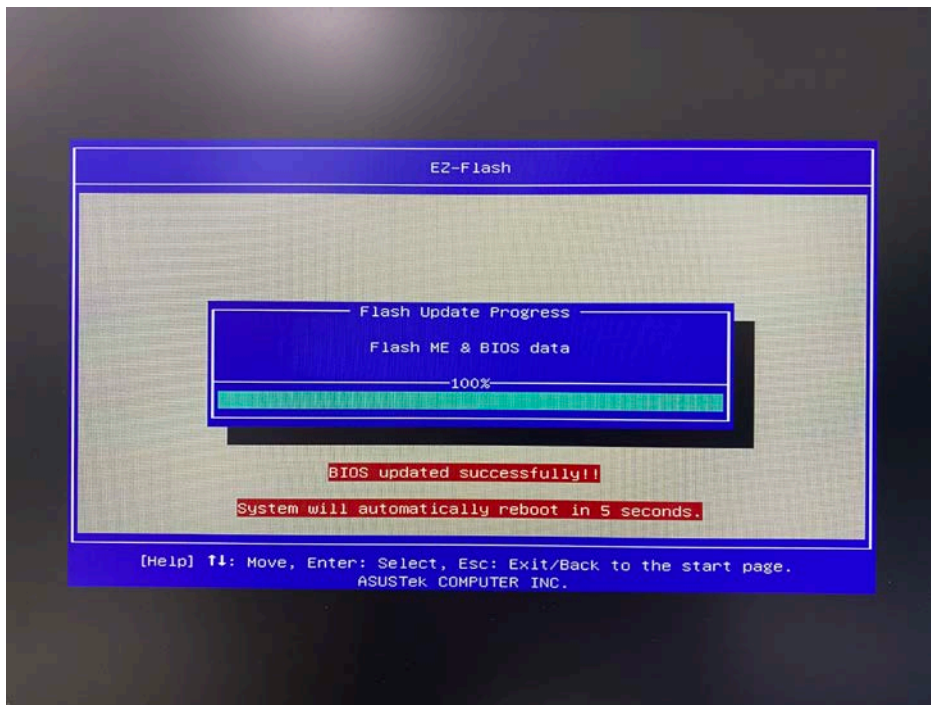


7. System will auto reboot and boot into EZ-Flash mode.
8. Select your USB flash drive and BIOS image and press enter to start BIOS flash.

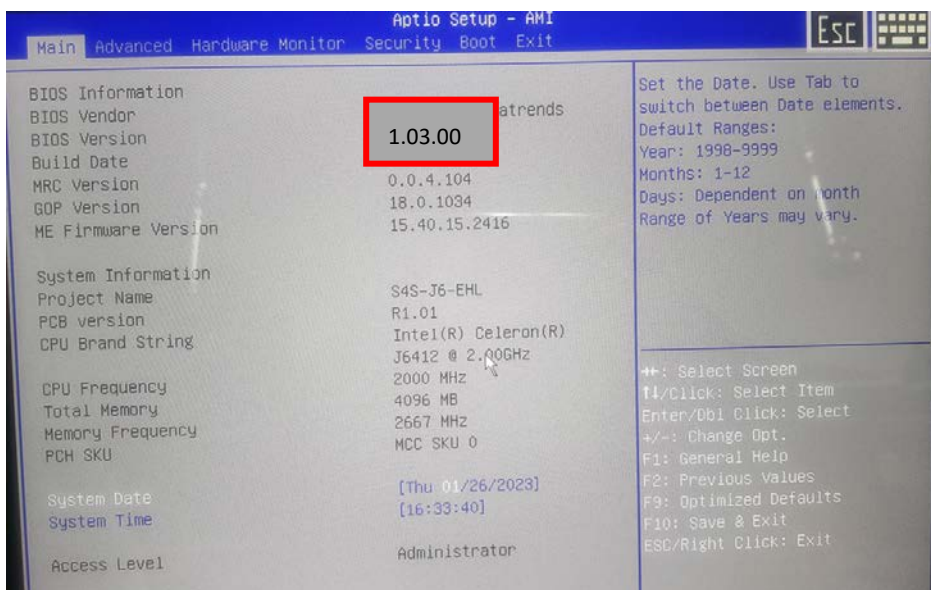




9. After BIOS flash update is complete system will auto reboot again.



10. At post screen, press “Delete” key to enter BIOS setup menu.
11. Check BIOS revision has been successfully updated at main menu.



12. Press “F9” key and press “ENTER” key at key board to Load optimized defaults
13. Press “F10” key and press “ENTER” key at key board to save and exit.